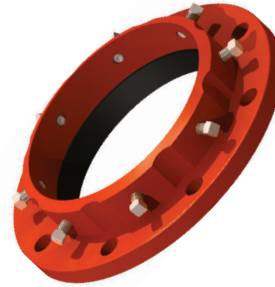


REDI-FLANGE™



ANSI B16.1 Class 125
ANSI B16.5 Class 150

**No Welding!
No Threading!**



STANDARDS:

Ductile Iron - ASTM A536
Grade 65-45-12. Drilling to
ANSI B16.1 - 125 lb.
ANSI B16.5 - 150 lb.

SET SCREW: AISI 4140 steel
Tensile 160,000 psi minimum

GASKET: SBR (BUNA-N).

**HYDROSTATIC TEST
PRESSURE:**

MODEL - RFC-2/RFS-2 - 125 lb./150 lb.
3 in. - 8 in. 600 psi (UL rated 175 psi)
10 in. 525 psi (UL rated 175 psi)

MODEL - RFC-4 - 125 lb./150 lb.
14 in. - 24 in. 450 psi
30 in. - 36 in. 300 psi

The *Redi-Flange* joins valves, fittings and equipment with integral flanged ends to plain end pipe, without the need of pipe end preparation. Absolutely no threading, welding, or grooving is necessary. The working principle of the *Redi- Flange* is relatively simple. Slide the flange over plain end pipe and follow it with a standard mechanical joint gasket. When the *Redi- Flange* is brought to mate against an existing flange, and the flange bolts are tightened, a compression type seal is created against the mating flange, and pipe surface. End restraint is provided when the set screws are tightened.

Nom. Pipe Size	Part No.	D.I. Pipe O.D. RFC-2-D	Steel Pipe O.D. RFS-2-S	Flange O.D.	Bolt Circle	Bolt Hole Dia.	Set Screws		Wgt. Approx.
							No.	Size	
*2	RFC-201	2.50	2.38	6	4-3/4	3/4	2	1/2 x 1	3.5
*2-1/2	RFC-202	-	2.88	7	5-1/2	3/4	4	1/2 x 1	4
*3	RFC-203	3.96	3.50	7-1/2	6	3/4	4	1/2 x 1	5
*4	RFC-204	4.80	4.50	9	7-1/2	3/4	4	1/2 x 1	8
*5	RFC-205	-	5.56	10	8-1/2	7/8	8	1/2 x 1	9
*6	RFC-206	6.90	6.625	11	9-1/2	7/8	8	1/2 x 1	10
*8	RFC-208	9.05	8.625	13-1/2	11-3/4	7/8	8	5/8 x 1 1/4	17
*10	RFC-210	11.10	10.75	16	14-1/4	1	12	5/8 x 1-1/4	22
*12	RFC-212	13.20	12.75	19	17	1	12	5/8 x 1-1/4	31

Use Prefix RFC for DI Pipe - RFS for Steel Pipe

Nom. Pipe Size	Part No.	D.I. Pipe O.D. RFC-4-D	Flange O.D.	Bolt Circle	Bolt Hole Dia.	Set Screws		Wgt. Approx.
						No.	Size	
14	RFC-414	15.30	21	18-3/4	1-1/8	12	5/8 x 1-1/4	70
16	RFC-416	17.40	23-1/2	21-1/4	1-1/8	16	5/8 x 1-1/4	79
18	RFC-418	19.50	25	22-3/4	1-1/4	16	3/4 x 2	90
20	RFC-420	21.60	27-1/2	25	1-1/4	20	3/4 x 2	145
24	RFC-424	25.80	32	29-1/2	1-3/8	20	3/4 x 2	175
30	RFC-430	32.00	38-3/4	36	1-3/8	28	1 x 2-1/4	270
36	RFC-436	38.30	46	42-3/4	1-5/8	32	1 x 2-1/4	400



WARNING: This product can expose you to chemicals including lead, which is known to the State of California to cause cancer and birth defects or other reproductive harm. For more information go to www.P65Warnings.ca.gov.



Napac, Inc.
120 Front Street, Suite 820, Worcester, MA 01608
TEL. 800-807-2215
Website: www.napacinc.com

Recommended Set Screw Torque Values



NOTE: Not to be used on plain end fittings or PVC and HDPE pipes.

RECOMMENDED SET SCREW TORQUE VALUES										
FLANGE SIZE	SET SCREW SIZE	RECOMMENDED SET SCREW TORQUE VALUE (FT-LBS)								
		DUCTILE IRON PIPE (CLASS)					STEEL PIPE (SCHEDULE)			
		50	51	52	53+	PC350	10	20	30	40+
3"	1/2" x 1 1/4"	-	50	70	70	50	30	-	-	70
4"	1/2" x 1 1/4"	-	50	70	70	50	30	-	-	70
6"	1/2" x 1 1/4"	50	60	80	90	50	30	-	-	90
8"	5/8" x 1 1/2"	75	75	80	90	75	30	50	50	90
10"	5/8" x 1 1/2"	75	75	80	90	75	40	50	50	90
12"	5/8" x 1 1/2"	75	75	80	90	75	40	50	60	90
14"	5/8" x 1 1/2"	75	75	90	90	75	N/A	N/A	N/A	N/A
16"	5/8" x 1 1/2"	75	75	90	90	75	N/A	N/A	N/A	N/A
18"	3/4" x 2"	75	80	115	115	75	N/A	N/A	N/A	N/A
20"	3/4" x 2"	75	80	115	115	75	N/A	N/A	N/A	N/A
24"	3/4" x 2"	75	80	115	115	80	N/A	N/A	N/A	N/A
30"	1" x 2 1/4"	90	110	125	125	125	N/A	N/A	N/A	N/A
36"	1" x 2 1/4"	90	110	125	125	125	N/A	N/A	N/A	N/A



Napac, Inc.
 120 Front Street, Suite 820, Worcester, MA 01608
 TEL. 800-807-2215
 Website: www.napacinc.com